



BROTATHAN

Croeso

Mae Llywodraeth Cymru wedi buddsoddi'n sylweddol ym Mro Tathan er mwyn creu amgylchedd llewyrchus i fusnesau a hoffem eich gwahodd i gymryd cipolwg arno a bod yn rhan o'n cymuned sy'n tyfu.

Welcome

Welsh Government has invested heavily at Bro Tathan to create a thriving environment for business to flourish and we invite you to take a look and be part of our growing community.



Trosolwg

Parc busnes gyda thuag 1.6 miliwn troedfedd sgwâr o lawr cyflogaeth sy'n gartref i gwmnïau mawr sy'n cynnwys Aston Martin Lagonda, eCube Solutions a Bristow Helicopters.

Mae Bro Tathan yn dechrau ar y cam nesaf yn ei ddatblygiad cyffrous i greu cyrchfan arloesol i fusnesau, gan gynnig amrywiaeth o gyfleoedd datblygu a galwedigaethol.

Ar safle o tua **1,200 o erwau**, gyda'i redfa ei hun, sy'n gyfan gwbl weithredol, mae Bro Tathan mewn lleoliad strategol o fewn Ardal Fenter Maes Awyr Caerdydd a Bro Tathan, 5 milltir o Faes Awyr Caerdydd ac yn gyfleus o fewn cyrraedd traffordd yr M4 a phrif ddinasoedd y DU.

Mae'r perchnogion, Llywodraeth Cymru, yn parhau i fuddsoddi'n drwm yn y seilwaith i greu amgylchedd llewyrchus i fusnes ym Mro Tathan. Mae hyn yn cynnwys creu rhedfa a gaiff ei gweithredu gan weithwyr sifil ynghyd â ffordd fynediad sydd wedi gwella cysylltiad â'r safle'n sylweddol.

Mae'r awdurdod lleol yn cydnabod Bro Tathan fel lleoliad strategol ar gyfer cyflogaeth ac mae'n destun nifer o geisiadau cynllunio mawr cyfredol ac arfaethedig. Bydd hyn yn sicrhau atebion cyflym gyda gwasanaethau ar gyfer ystod eang o gwmnïau gan gynnwys y rhai a allai fod angen gwasanaethau ardal awyrennau.

Overview

An existing business park providing approximately 1.6 million sq ft of employment floor space and home to major occupiers including Aston Martin Lagonda, eCube Solutions and Bristow Helicopters.

Bro Tathan is embarking on the next phase in its exciting evolution to create a ground breaking destination for business offering a range of development and occupational opportunities.

Arranged over a site of approximately **1,200 acres** together with its own fully operational runway, Bro Tathan is strategically located within the Cardiff Airport and Bro Tathan Enterprise Zone, 5 miles from Cardiff Airport and within easy reach of the M4 motorway and major UK cities.

Owners, Welsh Government continue to invest heavily in the infrastructure to create a thriving environment for business at Bro Tathan. This includes the creation of a civilian operated runway plus a new access road which has significantly improved connectivity into the site.

Identified as a strategic employment location by the local authority, Bro Tathan is subject to a number of current and pending major planning applications. This will enable quick and serviced solutions for a wide range of occupiers, including those that may require airside services.

Lleoliad Location

Mewn lleoliad strategol 10 munud o Faes Awyr Caerdydd ac 20 munud o draffordd yr M4, mae Bro Tathan yn sicrhau bod eich busnes o fewn cyrraedd yn gyfleus i bob un o ddinasoedd mawr y DU.

Strategically located 10 minutes to Cardiff Airport and 20 minutes to the M4 motorway, Bro Tathan puts your business within easy reach of all UK major cities.



Abertawe Swansea

Pen-y-bont Bridgend

2 awr i Lundain
2 hrs to London

Casnewydd Newport

M5
Birmingham ↗

Bryste Bristol

Caerdydd Cardiff

M4
Llundain London →

BROTATHAN

Mewn cwmni da

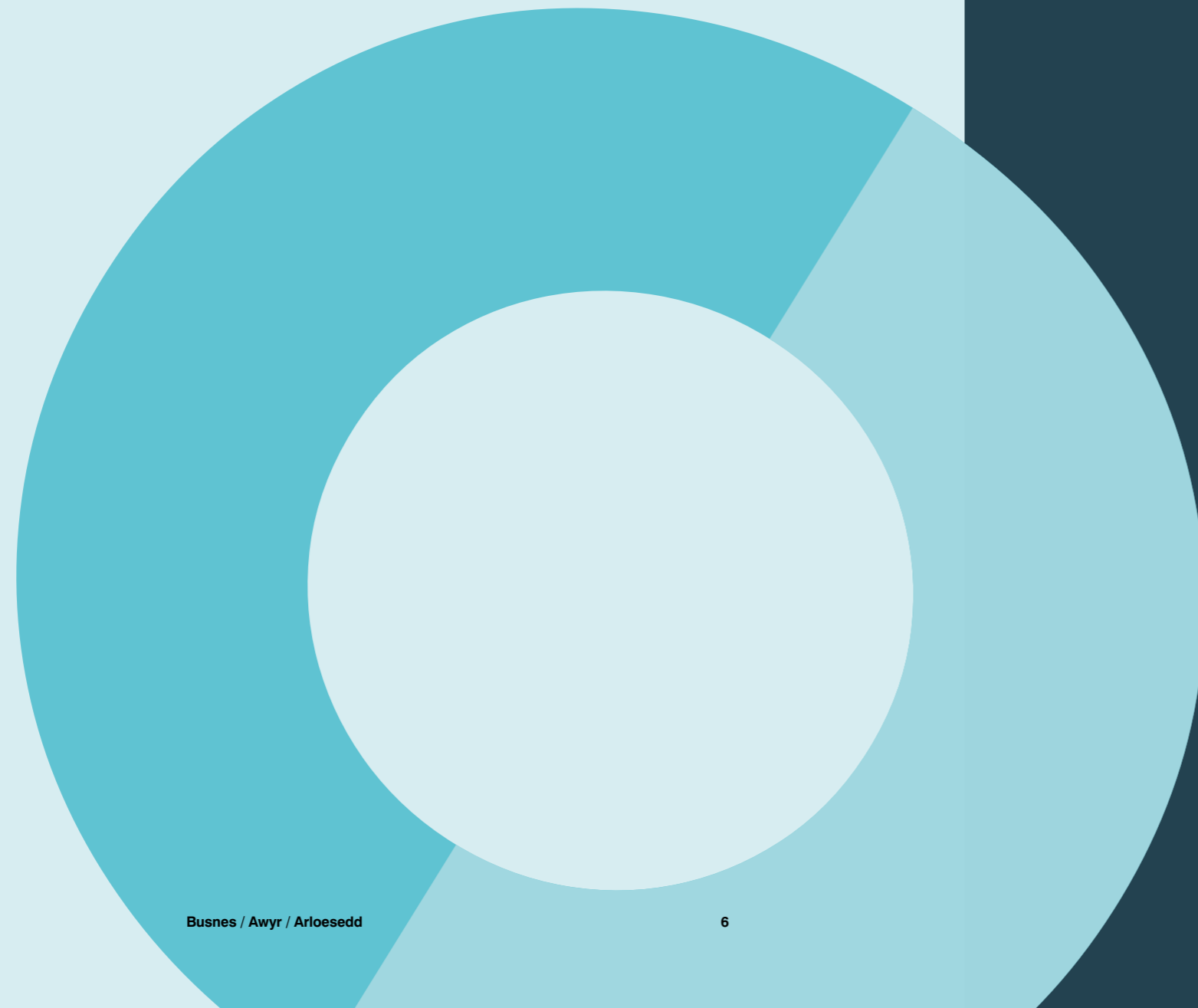
In good company

Mewn amgylchedd busnes llewyrchus ac yn gartref i gwmnïau rhyngwladol mawr, yn creu amgylchedd lle y gall eich busnes ffynnu.

Mae manteision Bro Tathan, gan gynnwys seilwaith newydd a chyfredol, cronfa o weithwyr o ansawdd uchel a llywodraeth sy'n chwarae rhan weithredol mewn denu mewnfuddsoddiad, wedi denu llu o fusnesau i Fro Tathan.

In a thriving established business environment home to major international occupiers, creating an environment where your business can thrive.

The benefits of Bro Tathan including new and existing infrastructure, a pool of high quality labour and a government that is actively involved in attracting inward investment has attracted numerous businesses to make the move to Bro Tathan.





ASTON MARTIN

Aston Martin Lagonda

Yn 2016, cyhoeddodd y gwneuthurwr ceir Prydeinig eiconig, Aston Martin Lagonda, y byddai'n agor lleoliad gweithgynhyrchu ym Mro Tathan. Gyda safle 90 erw, gwnaeth Bro Tathan gryn argraff gan guro nifer o leoliadau eraill er mwyn ennill ei le fel lleoliad gweithgynhyrchu diweddaraf Aston Martin, lle y bydd yn cynhyrchu ei SUV moethus cyntaf, y DBX.

Disgwylir i'r DBX gael ei lansio ddiwedd 2019 ar ôl cael ei adeiladu yn y ffatri weithgynhyrchu foethus, fwyaf newydd a fydd, yn y pen draw, yn "Gartref i Drydaneiddio", lle y caiff cerbydau cyfan gwbl electronig y cwmni eu cynhyrchu.

Bydd cerbydau trydan batri newydd Aston Martin yn cael eu gwneud ym Mro Morgannwg, a fydd, hefyd, yn gartref gweithgynhyrchu i'w frand Lagonda.

Mae'r gwaith cynhyrchu eisoes wedi dechrau, ac mae'n gartref i tua 200 o weithwyr. Gyda'r modelau prototeip cyntaf yn cael eu cynhyrchu yn ystod ail chwarter 2019, bydd y gweithlu yn parhau i dyfu yn ystod y flwyddyn i dros 600 erbyn chwarter cyntaf 2020 wrth i waith cynhyrchu'r DBX gynyddu.

Aston Martin Lagonda

The iconic British carmaker Aston Martin Lagonda announced in 2016 that it would be opening a manufacturing location in Bro Tathan. Impressed by the 90-acre site, Bro Tathan beat off a number of rival sites to be the newest manufacturing location for Aston Martin where it will produce its first SUV, the DBX.

The DBX is scheduled to be unveiled at the end of 2019 and built in a state of the art luxury manufacturing plant that will ultimately become the "Home of Electrification" where the marque's fully-EV models enter production.

Aston Martin's new battery electric vehicles will be made in the Vale of Glamorgan, which will also be the manufacturing home for its Lagonda brand.

Already home to 200 employees, the workforce will continue to grow over the course of the year to more than 600 by the first quarter of 2020 as DBX enters production.



eCube Solutions

Cafodd eCube Solutions ei ffurfio yn 2011 ac mae wedi bod yn rhan o'r diwydiant gwasanaethau awyrennau'n fyd-eang, gan arbenigo'n wreiddiol mewn prosiectau 'diwedd-oes' awyrennau. Mae'r busnes wedi'i leoli ym Mro Tathan ac wedi datblygu arbenigedd bellach mewn darparu datrysiadau cyflawn, yn amrywio o barcio a storio awyrennau i reoli stoc a logisteg trydydd parti.

Dechreuodd eCube Solutions ym Mro Tathan yn wreiddiol gyda dim ond dau o bobl. Erbyn hyn, gall y cwmni ymfalchïo mewn cryn lwyddiant, yn cyflogi dros 100 o bobl, ac mae wedi ehangu i Sbaen yn ddiweddar.

eCube Solutions

Formed in 2011, and a global player in the aviation services industry, eCube Solutions initially specialised in 'end-of-life' aircraft projects. Based at Bro Tathan, the business has subsequently developed expertise in delivering complete solutions, ranging from aircraft parking and storage to inventory management and third party logistics.

eCube Solutions initially started at Bro Tathan with just two people. Today the business boasts huge success, employs over 100 people and has recently expanded into Spain.



"O ran eCube Solutions, mae gan Fro Tathan gyfuniad unigryw o fanteision - mynediad at gronfa o dalent yn y byd awyrennau yn Ne Cymru, maes awyr wedi'i reoleiddio, gyda gwasanaeth rheoli traffig awyr, rhedfa sy'n addas i awyrennau o bob maint, mynediad cyfleus i Gaerdydd, maes awyr Caerdydd a'r M4/M1/M5 ac, yn bennaf, cefnogaeth Llywodraeth Cymru, gyda Thîm Datblygu'r Maes Awyr a Busnes Cymru yn cefnogi datblygiad ein cwmni yn rheolaidd."

Peter Dunsford (Cyfarwyddwr eCube)

"For eCube Solutions, Bro Tathan has a unique combination of offerings – access to the South Wales pool of aviation talent, a regulated airfield with permanent Air Traffic Control, a runway which accommodates aircraft of all sizes, easy access to Cardiff, Cardiff airport and the M4/M1/M5, and last but not least the backing of the Welsh Government, with the Airfield Development Team and Business Wales supporting our company's development on a regular basis."

Peter Dunsford (eCube, Director)

Sgiliau Skills

Gweithlu hyddysg, yn seiliedig ar sgiliau, gyda chysylltiadau â cholegau a phrifysgolion lleol.

Ym Mro Tathan, bydd gennych y cyfleusterau, y sgiliau, y profiad a'r gadwyn gyflenwi a ddaw gyda dros 50 mlynedd o dreftadaeth awyrfod ac amddiffyn. Bydd gennych hefyd weithlu medrus ehangach o fewn cyrraedd, drwy'r prifysgolion a'r ysgolion niferus ledled Cymru.

Mae'r 8 prifysgol yng Nghymru a 14 o golegau addysg bellach yn gartref i dros 135,000 o fyfyrwyr, o dros 170 o wledydd, sydd wedi cael eu denu gan ddiwylliant o ragoriaeth yn y meysydd addysgu ac ymchwil. O arloesi modern i sgiliau galwedigaethol ymarferol, mae'r sefydliadau hyn yn cydweithio'n agos â diwydiant i sicrhau bod eu myfyrwyr yn meddu ar y sgiliau sydd eu hangen arnynt i lwyddo ym mhob sector.

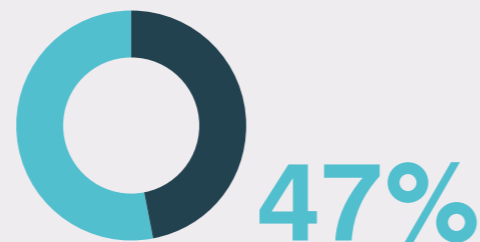
Mae Llywodraeth Cymru, Maes Awyr Caerdydd a'r awdurdod lleol yn gweithio'n agos gyda cholegau a phrifysgolion lleol i ddarparu cronfa o dalent i gefnogi busnesau lleol.

Access to an educated, skill based workforce with Links to local colleges and universities.

At Bro Tathan, you'll have the facilities, skills, experience and supply chain that comes with more than 50 years' aerospace and defence heritage. You will also have access to the wider skilled workforce provided by the numerous universities and schools across Wales.

Wales' 8 universities and 14 further education colleges are home to over 135,000 students, from over 170 countries, attracted by a culture of excellence in teaching and research. From cutting edge innovation to hands-on vocational skills, these institutions work hand-in-hand with industry to equip students with the skills they need to succeed in all sectors.

Welsh Government, Cardiff Airport and the local authority work closely with a number of local colleges and universities to provide a pool of talent to support local businesses.



Mae 47% o boblogaeth Cymru rhwng 21 a 64 oed yn raddedigion, yn ail i Lundain yn unig, a gall busnesau yng Nghymru fanteisio ar gronfa'r DU o dros 14 miliwn o raddedigion.

47% of the Welsh population aged 21-64 years old are graduates, second only to London, while businesses in Wales can also tap into the UK pool of over 14 million graduates.



Coleg Caerdydd a'r Fro yw un o'r colegau mwyaf yn y DU, ac mae'n darparu addysg a hyfforddiant o ansawdd uchel ar draws Prifddinas Ranbarth Cymru.

Mae ei Ganolfan Hyfforddiant Awyrfodol Ryngwladol wedi'i lleoli o fewn Ardal Fenter Maes Awyr Caerdydd a Bro Tathan. Mae'n arbenigo mewn hyfforddi unigolion yn y sector Awyrfodol, ac mae'n gweithio gyda diwydiant yng Nghymru, y DU ac ar draws y byd.

Mae'r coleg yn gweithio gyda 30,000 o ddysgwyr bob blwyddyn, o bobl ifanc i oedolion, a gall gynnig arlwy ymatebol anferthol o ran addysg bellach ac addysg uwch ynghyd â rhwydwaith eang o gyflogwyr, yn ogystal â'r ddarpariaeth prentisiaethau fwyaf yng Nghymru.



Mae cynllun datblygu cyfalaf uchelgeisiol yn golygu bod Coleg Caerdydd a'r Fro wedi buddsoddi mewn sawl campws ledled y rhanbarth a'u datblygu, gan ddarparu cyfleusterau dysgu ysbrydoledig sy'n diwallu anghenion diwydiannau.

Mae cynlluniau ar y gweill i greu safleoedd newydd sylweddol ym Mro Morgannwg dros y 3 blynedd nesaf, gan gynnwys canolfan ragoriaeth benodedig a fydd yn rhoi cefnogaeth uniongyrchol i sectorau twf pwysig sy'n cynnwys Awyrfodol, Moduro, Adeiladu a Gweithgynhyrchu Uwch. Mae'r cyfleusterau modern hyn yn cael eu datblygu yn unol â blaenoriaethau'r llywodraeth, cyflogwyr ac anghenion y gymuned ac yn rhoi cefnogaeth uniongyrchol i barhad twf a ffyniant ar draws y rhanbarth.



Coleg Caerdydd a'r Fro Cardiff and Vale College

Cardiff and Vale College (CAVC), is one of the largest colleges in the UK, delivering high quality education and training across the Capital Region of Wales.

Their International Centre for Aerospace Training (ICAT) is located within the Cardiff Airport and Bro Tathan Enterprise Zone. Specialising in the training of individuals in the Aerospace sector, CAVC works with industry in Wales, UK and across the world.

Working with 30,000 learners each year from young people to adults, CAVC has a huge responsive Further Education and Higher Education offer and a vast network of employers, also being the largest apprenticeship provider in Wales.

An ambitious capital development plan has seen CAVC invest in and develop brand new landmark multi-million pound campuses across the region, providing inspirational learning facilities that meet industry requirements.

Plans are in place for the creation of significant new sites in the Vale of Glamorgan over the next 3 years, including a dedicated centre of excellence directly supporting priority growth sectors of Aerospace, Automotive, Construction and Advanced Manufacturing. These state of the art facilities are all being developed in line with government priorities, employer and community needs and directly supporting continued growth and prosperity across the region.

Ardal awyrennau Airside

Mynediad uniongyrchol at redfa 1,800m (5,905 tr) sy'n gyfan gwbl weithredol gyda rhedfa Cat 1 ILS ar y gweill a chymorth llawn o ran yr ardal awyrennau.

Gyda gwaddol o gynnal a chadw awyrennau a pheirianneg awyrennau, mae gan Bro Tathan le amlwg o hyd yn y maes gwaith Cynnal a Chadw, Atgyweirio ac Archwilio (MRO) awyrennau yn genedlaethol ac yn rhyngwladol. Yn wahanol i feysydd awyr eraill, mae Bro Tathan wedi datblygu'r gwaith hwn fel ei brif weithgaredd. Fodd bynnag, nid yw anghenion defnyddwyr eraill yn cael eu hanwybyddu, er enghraifft, mae General Aviation (GA) wedi sefydlu ardaloedd ar wahân ar gyfer gweithgareddau penodol.

Mae Bro Tathan yn darparu ar gyfer pob gweithgaredd. Mae awyrennau ysgafn ac awyrennau cylchdroi yn gweithredu i'r de o'r rhedfa, gyda gweithgareddau peirianneg trwm, gan gynnwys cynnal a chadw, atgyweirio ac archwilio yn cael eu cynnal i'r gogledd. Mae'r trefniant hwn yn golygu bod gweithgareddau'n cael eu cadw ar wahân ac y gall traffig y gwaith cynnal a chadw, atgyweirio ac archwilio weithredu i'r graddau nad yw meysydd awyr eraill yn gallu ei gynnal, lle mae symudiadau sy'n cynhyrchu referniw yn cael blaenoriaeth.

Cymuned Hedfan

Mae amryw o ddefnyddwyr ym Bro Tathan sydd eisoes yn defnyddio'r gwasanaethau sydd ar gael yn yr ardal awyrennau ac yn cael budd ohonynt. Mae'r rhain yn cynnwys Sgwadron Prifysgol Cymru (UWAS) a'r darparwyr cynnal a chadw, atgyweirio ac archwilio mawr, Caerdav ac eCube. Mae'r gweithredwyr awyrennau cylchdroi sy'n gweithio ar y safle yn cynnwys cyfleuster Bristows SAR a Gwasanaeth Awyr Cenedlaethol yr Heddlu (NPAS) gydag EC135. Caiff gwasanaethau peirianneg awyrennau cyffredinol eu darparu hefyd gan GJD Services a Horizon Aircraft Services. Mae'r sefydliadau hyn yn gweithredu'n annibynnol ond maent yn cydweithio ac yn dibynnu ar ei gilydd o ran anghenion arbenigol pan fydd angen.

Direct access to fully operational 1,800m (5,905 ft) runway with Cat 1 ILS pending and full airside support.

Bro Tathan, with its legacy of aircraft maintenance and engineering continues to be prominent in the national and international delivery of Maintenance, Repair and Overhaul (MRO). Unlike other airfields, Bro Tathan has developed with MRO as its principal activity. Albeit the demands of other users are not ignored, for example General Aviation (GA) have established separate areas for distinct activities.

Bro Tathan caters for all activities. Light aircraft and rotary operations operate to the south of the runway, whilst heavy engineering activities, including MRO take place to the north. This arrangement means that activities remain separate and that MRO traffic can operate with a significance not appreciated at other airfields, where revenue generating movements have priority.

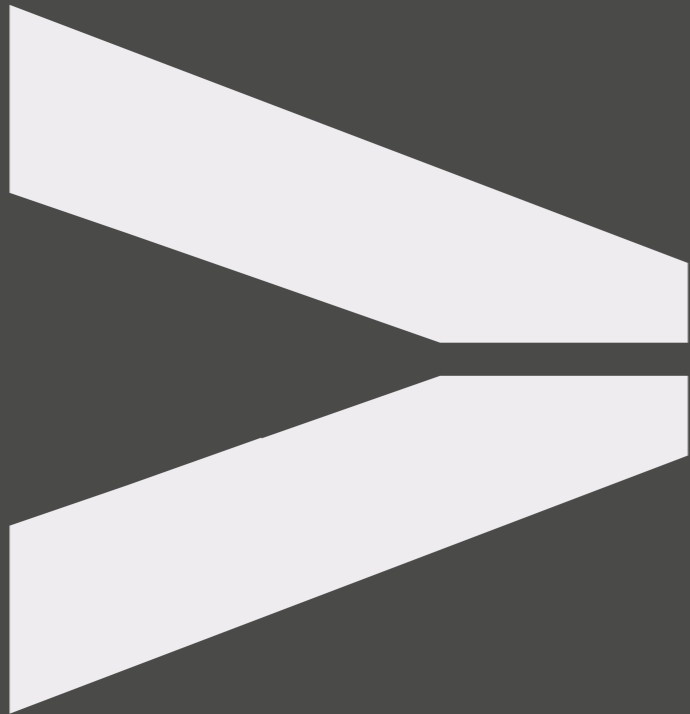
An Aviation Community

There are multiple users already at Bro Tathan who utilise and benefit from the airside services available. These include the University of Wales Squadron (UWAS) and the large MRO providers of Caerdav and eCube. Rotary operators working on the site include Bristows SAR facility and the National Police Air Service (NPAS) with an EC135. There are also GA engineering services provided by GJD Services and Horizon Aircraft Services, these organisations operate independently but collaboratively and rely upon each other for specialist needs when required.





Gwasanaethau ardal awyrennau sydd ar gael i'ch busnes ar y ddaear ac yn yr awyr.



Rhedfa 1,800m cwbl weithredol ac sy'n diwallu anghenion bron bob awyren ac wedi'i thrwyddedu gan yr Awdurdod Hedfan Sifil fel cyfleuster Cod 4E gyda chryfder palmant i fodloni'r galwadau hyn.



Caiff yr holl ardaloedd eu gwasanaethu gan atredfeydd a phalmentydd penodedig sy'n briodol i'r awyren er mwyn sicrhau hygyrchedd.



Mae **CAT I ILS** ar y maes awyr ac mae'n gwasanaethu rhedfa 25.



Mae'r **cyfleuster gwasanaeth rheoli traffig awyr wedi cael ei adnewyddu'n ddiweddar** ac yn darparu gwasanaethau lleol a pharhad traffig gyda gwasanaethau Traffig Awyr Caerdydd a dogfennau angenrheidiol ar gyfer cyrchfannau byd-eang.



Darperir Gwasanaethau Tân Maes Glanio i Gategori 5 ac mae Categoriâu 6 a 7 ar gael hefyd.



Tanwydd awyrennau ar gael Jet A1 ac Avgas.



Yn wahanol i bron bob lleoliad arall yn y DU, **mae gan Fro Tathan hygyrchedd ar y tir ynghyd â hwylustod unigryw o ran gofod awyr**, o fewn Gofod Awyr wedi'i Reoli ym Maes Awyr Caerdydd, sy'n golygu bod gan draffig awyr amgylchedd wedi'i reoli.



Y tu hwnt i ffiniau'r maes awyr, **mae gofod awyr nad yw wedi ei reoleiddio sy'n galluogi gweithredwyr i weithredu fel y mynnent**, gan gynnig y fantais o gynnal profion hedfan a gwiriadau defnyddioldeb ar ôl gwneud gwaith cynnal a chadw.



Mae Gwasanaethau Traffig Awyr a gaiff eu darparu yn yr ardal hon gan Faes Awyr Caerdydd yn cwmpasu prif radar a radar eilaidd a lefel o wasanaethau sy'n briodol i'r gweithgaredd.



Amgylchedd sy'n cynnig galluoedd sylweddol o ran hyfforddiant hedfan a phrofi awyrennau ar ôl gwaith cynnal a chadw.



Airside services available to your business on the ground and in the sky.



Fully operational 1,800m runway that meets almost all aircraft requirements and is licensed by the CAA as a Code 4E facility with a pavement strength to meet these demands.



All areas are serviced by discrete taxiways and aprons appropriate to aircraft so that accessibility is retained throughout.



A **CAT I ILS** is located on the airfield and serves runway 25.



A newly refurbished ATC facility providing local services and traffic continuity with Cardiff Air Traffic services and necessary documentation for global destinations.



Aerodrome Fire Services are provided to Category 5 with 6 & 7 available.



Aviation fuels available Jet A1 and Avgas.



Unlike almost any other location in the UK, **Bro Tathan has surface accessibility allied with unique airspace convenience**, positioned within Cardiff Airport's associated Controlled Airspace (CAS) meaning air traffic enjoys a controlled environment.



Beyond the airfield boundary, **there is unregulated airspace enabling operators to function freely**, providing the benefits of conducting air tests and serviceability checks post maintenance.



Air Traffic Services provided in this area by Cardiff Airport give both primary and secondary radar cover and a level of services appropriate with activity.



An environment that creates significant capabilities for flight training and flight proving post maintenance.

Cysylltedd Connectivity

Cysylltedd â'r farchnad, cysylltiad cyfleus â maes awyr rhyngwladol yn ogystal â rhwydwaith traffyrdd y DU.

Mewn lleoliad strategol o fewn 10 munud i Faes Awyr Caerdydd ac 20 munud i draffordd yr M4, mae Bro Tathan yn sicrhau bod eich busnes o fewn cyrraedd pob dinas fawr yn y DU. Gellir cyrraedd Caerdydd ac Abertawe o fewn awr, ac mae'r M4 yn darparu llwybr uniongyrchol i Lundain. Mae Llywodraeth Cymru wedi buddsoddi swm sylweddol er mwyn gwella cysylltedd Bro Tathan, sy'n cynnwys Ffordd Fynediad newydd y Gogledd.

Connectivity to market, easy access to an international airport and the UK motorway network.

Strategically located 10 minutes to Cardiff Airport and 20 minutes to the M4 motorway, Bro Tathan puts your business within easy reach of all UK major cities. Cardiff and Swansea can be reached within an hour, whilst the M4 provides a direct route to London. Welsh Government have invested a significant amount into improving the connectivity of Bro Tathan which includes the newly constructed Northern Access Road.

Mewn Car / By Road

Amseroedd Teithio mewn Car / Travel Times by Car



M4	20 mun/mins
Caerdydd / Cardiff	40 mun/mins
Abertawe / Swansea	1 awr/hr
Bryste / Bristol	1.5 awr/hrs
Llundain / London	3.5 awr/hrs
Maes Awr Caerdydd / Cardiff Airport	10 mun/mins

Ar y Trên / By Train

Amseroedd Teithio o Ganol Caerdydd / Travel Times from Cardiff Central



Llundain / London	2 awr/hrs
Bryste / Bristol	50 mun/mins
Birmingham	2 awr/hrs
Manceinion / Manchester	3.5 awr/hrs

Mewn Awyren / By Air

Amseroedd Teithio o Faes Awyr Caerdydd / Travel Times from Cardiff Airport



Caeredin / Edinburgh	1 awr/hr 10 mun/mins
Belfast	1 awr/hr 5 mun/mins
Paris	1 awr/hr 25 mun/mins
Barcelona	2 awr/hrs 5 mun/mins
Ynys Môn / Anglesey	50 mun/mins



Digidol Digital

Yn ogystal â'r cysylltiad da o ran trafndiaeth gyhoeddus, ffyrdd ac awyr, gall y rhan fwyaf o lefydd ym Mro Tathan gysylltu â band eang ffeibr cyflym, diolch i ymyrraeth Llywodraeth Cymru gyda'r posibilrwydd o gysylltu â band eang Cysylltiad Ffeibr i'r Adeilad (FTTP) gyda gallu gigabit. Mae gwasanaethau Ether-rwyd Dosbarth Menter capasiti uwch hefyd ar gael ac yn cael eu defnyddio ym Mro Tathan.

Mae cymorth ychwanegol ar gael i gysylltu busnesau â band eang gallu-gigabit drwy'r Cynllun Taleb Band Eang Gigabit. O ran prosiectau grwpiau, bydd Llywodraeth Cymru yn darparu ychwanegiad at y daleb hon, sy'n golygu bod hyd at £5,500 ar gael fesul busnes.

In addition to being well connected by public transport, road and air, the vast majority of properties at Bro Tathan can access fast fibre broadband thanks to the Welsh Government's intervention with potential access to gigabit-capable Fibre to the Premises (FTTP) broadband. Higher capacity Enterprise Class Ethernet services are also available and in use at Bro Tathan.

Additional support is available to connect businesses to gigabit-capable broadband through the Gigabit Broadband Voucher Scheme. For group projects, the Welsh Government will provide a top up to this voucher meaning that up to £5,500 is available per business.

Gall ein gwasanaeth Cyflymu Cymru i Fusnesau hefyd helpu busnesau i ddeall, mabwysiadu a defnyddio'r cyfleoedd sydd ar gael drwy'r dechnoleg hon.

I gael gwybod mwy am y gwasanaethau a'r cymorth sydd ar gael, ewch i

www.llyw.cymru/bandeang

Our Superfast Business Wales service can also help businesses understand, adopt and exploit the opportunities available through this technology.

To find out more about the services and support available visit

www.gov.wales/broadband

Y lle i gynnal busnes

The place to do business

Safle diogel sy'n cynnig ystod o gyfleusterau parod, gan gynnwys siediau awyrennau wedi cael eu hadnewyddu, cyfleusterau warws a swyddfeydd, yn ogystal â chyfleoedd i ddylunio ac adeiladu o'r newydd.

Gall Bro Tathan gynnig cyfle i chi esblygu eich anghenion llety wrth i'ch busnes dyfu.

Mae eiddo ar gael ar amrywiaeth o gytundebau lesddaliad hyblyg tymor byr a thymor hwy.

A secure site offering a range of existing facilities including bespoke refurbished hangars, warehousing and office facilities as well as design and build new build opportunities.

Bro Tathan can provide you with the opportunity to evolve your accommodation needs as your business grows.

Property is available on a range of flexible short term and longer leasehold commitments.

Bro Tathan

Y Porth

Mynedfa strategol i Fro Tathan, sy'n darparu lleiniau datblygu gyda gwasanaethau wedi'u dylunio ar gyfer defnydd cymysg, gan gynnwys swyddfeydd, cyfleusterau pencadlys, man arddangos, yn ogystal â chyfleoedd manwerthu a hamdden er mwyn darparu gwasanaethau i ddefnyddwyr a chwmnïau.

Strategic gateway to Bro Tathan providing serviced development plots designed for a mix of uses including offices, headquarter facilities, showroom uses as well as retail and leisure opportunities aimed at providing consumer and occupier services.

Y Gogledd

Amrywiaeth o gyfleusterau diwydiannol parod ynghyd â swyddfeydd newydd, a chyfleoedd diwydiannol a logisteg. Mewn cilfach ar wahân i'r rhedfa gyda mynediad uniongyrchol i gerbydau o'r Ffordd Fynediad y Gogledd.

North

A range of existing industrial facilities together with new build office, industrial and logistics opportunities. Within an enclave site discrete from the runway with direct vehicular access from the Northern Access Road.

Y De

Amrywiaeth o gyfleusterau parod a chyfleoedd datblygu, rhai ohonynt â mynediad annibynnol, ar gael at amrywiaeth o ddibenion diwydiannol neu hedfan, a rhai â mynediad at redfa.

South

A range of existing facilities and development opportunities some with independent access available for a range of industrial or aviation type uses, some with runway access.

Y Dwyrain

Cyfle aiddatblygu sylweddol, gyda thua 130 o erwau sy'n addas ar gyfer cyfleoedd mewnfuddsoddi ar raddfa fawr i amrywiaeth o weithredwyr gweithgynhyrchu neu ymchwil a datblygu llai ar becynnau dylunio ac adeiladu.

East

Significant redevelopment opportunity comprising approximately 130 acres suitable for largescale inward investment opportunities for a range of smaller manufacturing or R&D type operators on design and build packages.

Y Gorllewin

Lleoliad delfrydol ar gyfer gweithrediadau cynnal a chadw, atgyweirio ac archwilio (MRO) ar gael fel lleiniau datblygu neu ar sail dylunio ac adeiladu gyda mynediad at redfa 1,800m, yn ddefnyddol ar gyfer busnesau sydd angen mynediad i'r ardal awyrennau.

West

Ideally suited for Maintenance, Repair and Overhaul (MRO) operations available as development plots or on a design and build basis with access to a fully operational 1,800m runway, perfect for businesses requiring airside access.





01



02



03



05

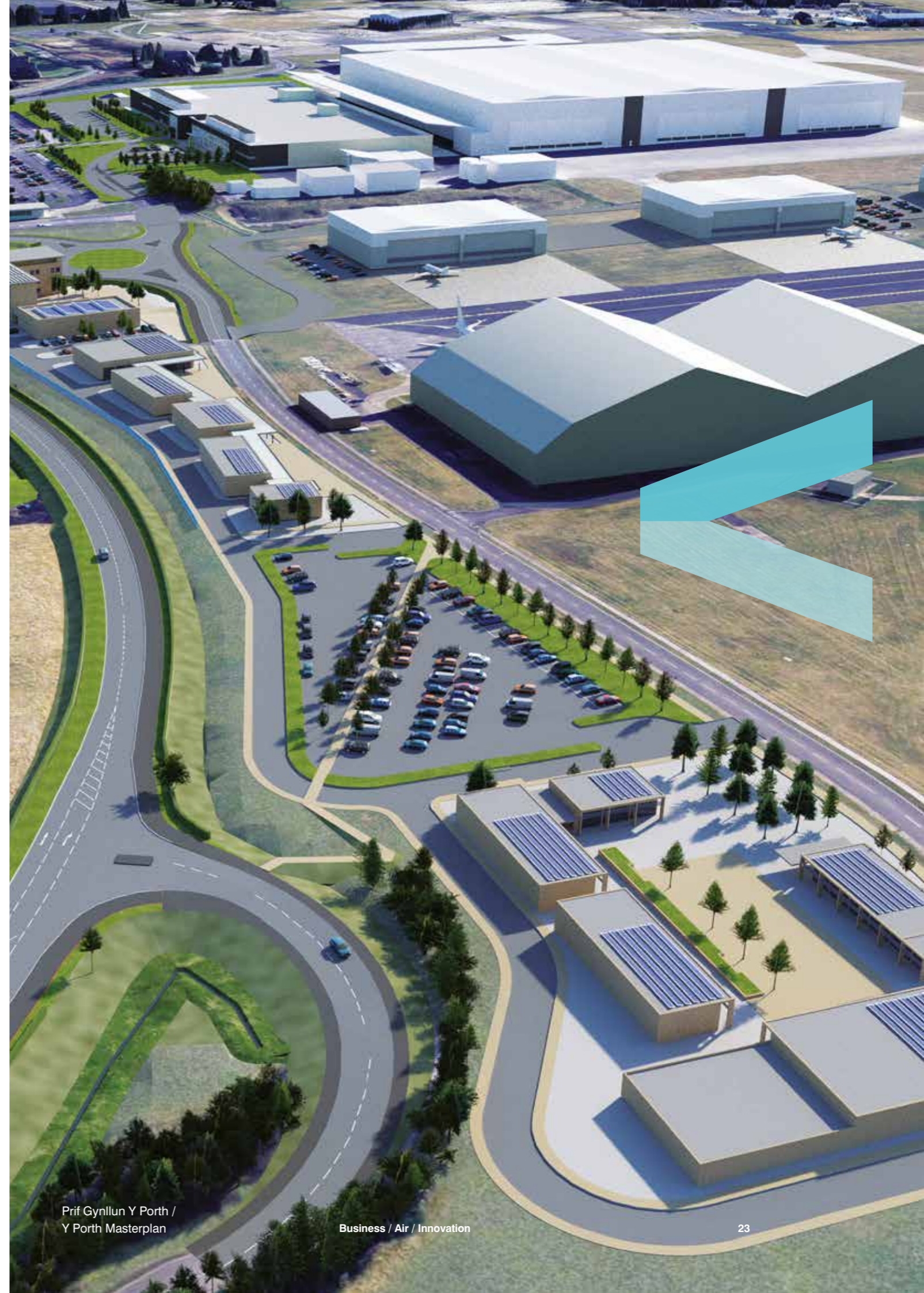


06



04

- 01 Aston Martin Lagonda HQ
- 02 Sied awyrennau / Hangar
- 03 Uned ddiwydiannol ym Mro Tathan / Industrial unit at Bro Tathan
- 04 Rhedfa ym Mro Tathan / Runway at Bro Tathan
- 05 Model DBX newydd AM Lagonda / AM Lagonda new DBX model
- 06 Atredfa ym Mro Tathan / Taxiway at Bro Tathan



Sut y gallwn eich cefnogi



Mae'r safle o dan berchnogaeth Llywodraeth Cymru ac mae'n rhan o Ardal Fenter Maes Awyr Caerdydd a Bro Tathan, a bydd eich busnes yn un o brif flaenoriaethau Llywodraeth Cymru, a fydd yn cefnogi a diwallu eich anghenion yn ôl y gofyn.

Buddsoddir swm sylweddol o arian yn y safle er mwyn creu amgylchedd llewyrchus, cynhyrchiol i'ch busnes ddatblygu a thyfu.

Person cyswllt penodol

Bydd person cyswllt penodol yn Llywodraeth Cymru, wedi'i gefnogi gan dimau o gynghorwyr profiadol ledled Cymru, yn rhoi cymorth ac arweiniad penodol i chi wrth i'ch busnes ddatblygu a thyfu ym Mro Tathan.

Mynediad at wneuthurwyr penderfyniadau allweddol

Llywodraeth ddatganoledig gyda'i pholisi unigryw ei hun. Bydd y rhai a fydd yn buddsoddi ym Mro Tathan yn gallu cael gafael ar wneuthurwyr penderfyniadau allweddol yn gyflym pan fydd angen hynny fwyaf arnynt.

Y darlun mwy

Rhwydweithiau busnes gweithgar a fydd yn cynnig cyfleoedd i chi a'ch cwmni gael gafael ar wybodaeth a chymorth economaidd, gwleidyddol a chymdeithasol pwysig yn ymwneud â materion fel seilwaith, gofynion adeiladu a chynllunio.

Banc Datblygu Cymru

Cafodd Banc Datblygu Cymru ei sefydlu gan Lywodraeth Cymru i gefnogi economi Cymru er mwyn ei gwneud yn haws i fusnesau gael y cyllid angenrheidiol i sefydlu, cryfhau a thyfu.

Ardal Fenter Maes Awyr Caerdydd a Bro Tathan

Gyda Bro Tathan wrth galon yr ardal, mae Ardal Fenter Maes Awyr Caerdydd a Sain Tathan yn canolbwyntio ar awyrofod, amddiffyn, moduro, gweithgynhyrchu a pheirianneg. Yn ogystal â'r maes awyr ar y safle, y ffaith bod maes awyr rhyngwladol o fewn tafliad carreg a digonedd o sgiliau technegol ar gael, mae bod yn rhan o'r Ardal Fenter yn cynnig nifer o fanteision i fusnesau.

How we can support you



Owned by Welsh Government and as part of the Cardiff Airport and Bro Tathan Enterprise Zone, your business will be a key priority of Welsh Government with your needs met and supported when required.

The site will receive high levels of investment to create a thriving, fertile environment for your business to develop and grow.

Dedicated point of contact

A dedicated point of contact at Welsh Government supported by teams of experienced advisors located across Wales will provide you with the specific support and guidance you need as your business develops and grows at Bro Tathan.

Access to key decision makers

A devolved government with its own distinctive policy. For those investing at Bro Tathan, you will have quick access to key decision makers when it matters most.

The bigger picture

Active business networks provide opportunities for you and your company to tap into important streams of economic, political and social knowledge and support on issues such as infrastructure, building requirements and planning.

Development Bank of Wales

The Development Bank of Wales was set up by the Welsh Government to support the economy of Wales by making it easier for businesses to get finance needed to start up, strengthen and grow.

Cardiff Airport and Bro Tathan Enterprise Zone

With Bro Tathan nestled at the heart of the Zone, Cardiff Airport and Bro Tathan Enterprise Zone is focused on aerospace, defence, automotive, manufacturing and engineering. In addition to the on-site airfield, proximity of an international airport and access to an abundance of technical skills, being a part of the Enterprise Zone boasts many benefits to businesses.

Cynaliadwyedd Sustainability

Ym Mro Tathan, bydd Llywodraeth Cymru yn cydweithio'n agos â chwmnïau, buddsoddwyr a datblygwyr i sicrhau dull gweithredu integredig, wedi'i dargedu ar gynaliadwyedd, gydag amcanion cymdeithasol, amgylcheddol ac economaidd.

Ar lefel genedlaethol, mae Llywodraeth Cymru wedi ymrwymo i sicrhau Cymru Carbon Isel sy'n rhoi lle blaenllaw a chanolog i lesiant pobl, iechyd yr economi a diogelu a gwella'r amgylchedd naturiol.

Mae cynaliadwyedd yn flaenoriaeth allweddol i Fro Tathan. Bydd targedau hirdymor a dulliau galluogi, megis datblygu sgiliau a threfniadau cynllunio yn cael eu rhoi ar waith er mwyn llywio cynaliadwyedd, lleihau ôl troed carbon Bro Tathan a sicrhau lle gwell i fyw a gweithio ynddo yn y pen draw.

At Bro Tathan, Welsh Government will work closely with occupiers, investors and developers to form an integrated, targeted approach to sustainability with social, environmental and economic goals.

At a national level, Welsh Government are dedicated to achieving a Low Carbon Wales that puts the welfare of people, the health of the economy, and the protection and enhancement of the natural environment front and centre.

Sustainability is a key priority for Bro Tathan. Long-term targets and enabling mechanisms such as skills development and planning arrangements will be put in place to drive sustainability, minimise Bro Tathan's carbon footprint and ultimately provide a better place to live and work.





Cysylltu

Mae croeso i chi gysylltu â ni i drafod eich anghenion yn uniongyrchol drwy ein hasiantau penodedig neu ein tîm gweithrediadau ar y safle.

Mae Bro Tathan yn cynnig amrywiaeth eang o gyfleoedd ar gyfer ystod eang o gwmnïau a datblygwyr fel ei gilydd. Buasem wrth ein bodd yn siarad â chi i drafod unrhyw ofynion penodol er mwyn canfod yr ateb fyddai'n gweithio i chi a'ch busnes.

Contact

Please do not hesitate to make contact whatever your needs directly through our appointed agents or our on-site operational team.

Bro Tathan offers a wide array of opportunities for a whole range of occupiers and developers alike. We would be delighted to talk with you to scope out any specific requirements in order to help you identify the right solution for you and your business.

Photograph credits:
© Aston Martin (2019), eCube
© Hawffruint y Goron 2019 /
Crown Copyright 2019
(Visit Wales)



Scott Caldwell
Savills

scaldwell@savills.com
+44 (0) 2920 368943

Chloe Beard
Savills

chloe.beard@savills.com
+44 (0) 2920 368967

Mae Savills, ei gleientiaid ac unrhyw gyd-asiantau eraill yn eich hysbysu: 1. Nad oes ganddynt awdurdod i wneud sylwadau neu roi gwarantau mewn perthynas â'r eiddo, yma nac mewn mannau eraill, naill ai ar eu pen eu hunain neu ar ran eu cleient neu fel arall. Nid ydynt yn derbyn unrhyw gyfrifoldeb am unrhyw ddatganiad a wneir yn y manylion hyn. Nid yw'r manylion hyn yn fflurio unrhyw gymng neu gcontract ac ni ddylid dibynnu arnynt fel datganiadau neu ffeithiau. 2. Mesuriadau bras yw unrhyw anwynebedd, mesuriadau neu bellteroedd. Canllaw yn unig yw'r testun, ffotograffau a'r cynllunio ac nid ydynt o reidrydd yn gynhwysfawr. Ni ddylid tybio bod gan yr eiddo yr holl ganiatadau cynllunio, rheoliadau adeiladu neu ganiatadau eraill angenrheidiol ac nid yw Savills wedi profi unrhyw wasanaeth, cyfarpar neu gyfleuster. Rhaid i brynwyr fodloni eu hunain drwy archwiliad neu fel arall.

Savills, their clients and any joint agents give notice that: 1. They are not authorised to make or give any representations or warranties in relation to the property either here or elsewhere, either on their own behalf or on behalf of their client or otherwise. They assume no responsibility for any statement that may be made in these particulars. These particulars do not form part of any offer or contract and must not be relied upon as statements or representations of fact. 2. Any areas, measurements or distances are approximate. The text, photographs and plans are for guidance only and are not necessarily comprehensive. It should not be assumed that the property has all necessary planning, building regulation or other consents and Savills have not tested any services, equipment or facilities. Purchasers must satisfy themselves by inspection or otherwise.



Llywodraeth Cymru
Welsh Government

David George

Rheolwr Prosiect Bro Tathan
Project Manager Bro Tathan

David.George@gov.wales
+44 (0) 1446 753043
+44 (0) 7741 312549

Keith Thomas

Rheolwr Datblygu
Maes Awyr Cymru
Airfield Development
Manager Wales

Keith.Thomas@gov.wales
+44 (0) 1446 753032
+44 (0) 7814 463863

